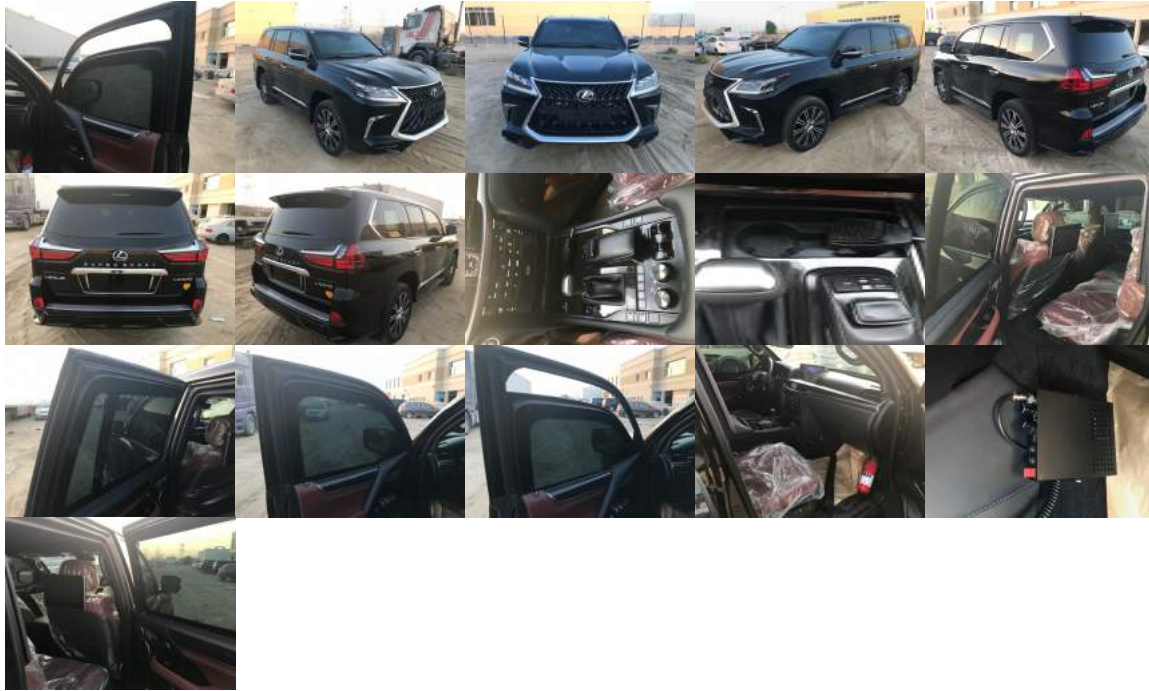


Vehicle Code: LX5700

Lexus LX570 5.7 Petrol Armored

Lexus LX570 Armored Car with B6 Level of Protection , Special Suspension and Special Brakes to manage the extra weight of car.



Engine and Transmission

Engine	5.7L Petrol
Transmission	Automatic 4WD

Dimensions, Capacities and Suspensions

S	7 Seating Capacity
---	--------------------

Interior Features and Safety

- Leather Interior
- Leather Seats
- Powered Seats
- Steering Control
- DVD
- NAV
- Push Start
- Micro Phone
- Strobe Light Control

Exterior Features

- Side Step
- Rear Camera
- Roof Rail
- Tinted Glass
- Alloy Wheel
- Strobe Light
- Fog Lamp
- Side Moulding
- Door Chrome handle