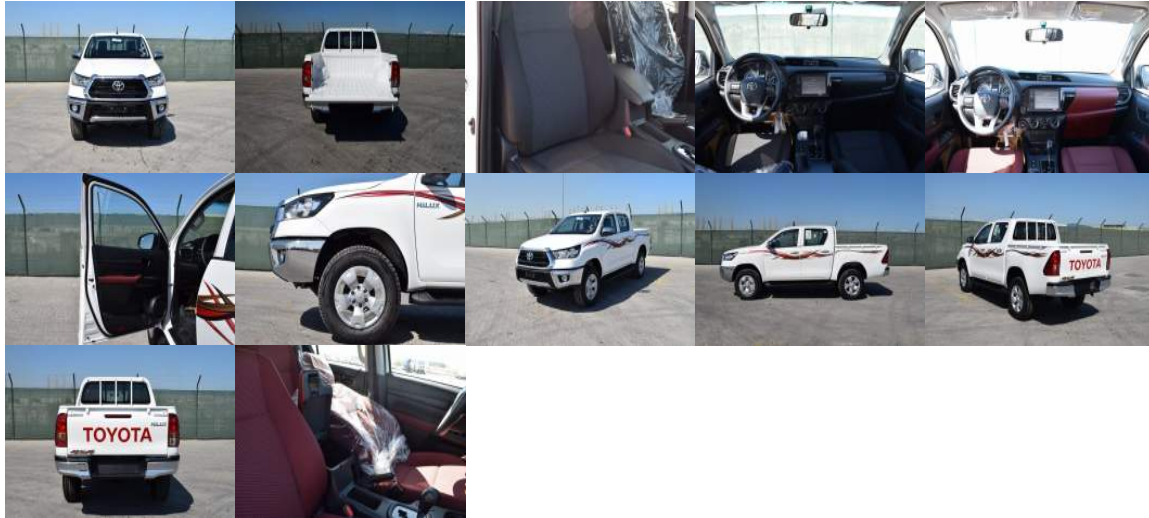


Vehicle Code: TH24ATM

Toyota Hilux 2.4 Diesel A/T Mid Option

TOYOTA HILUX DC 2.4L 4X4 (DIESEL) DLX A/T MY21 2.4L High-A/T Diesel MODEL YEAR 2021
BRAND NEW FOR EXPORT



Engine and Transmission

TERRAIN: 4X4 TRANSMISSION: 6-SPEED Automatic

Dimensions, Capacities and Suspensions

Interior Features and Safety

- MANUAL AIR CONDITIONER
- KEYLESS ENTRY
- POWER WINDOWS
- CENTER LOCKING
- COOL AND HOTBOX - GLOVE
- FABRIC SEATS
- RUBBER FLOOR MATS
- FRONT SEAT SEPARATE 2 PEOPLE
- MANUAL STEERING COLUMN TILT
- HILL ASSIST CONTROL
- AUDIO AM/FM/CD/AUX/USB/BLEETOOTH ; DISPLAY AUDIO WITH APPLE CARPLAY & ANDRIOD AUTO
- 4 NUMBER OF SPEAKERS
- WITH MID STEERING WHEEL CONTROL FOR AUDIO/TELEPHONE
- ANTI-LOCK BRAKE SYSTEM (ABS)
- VEHICLE STABILITY CONTROL
- ANTI THEFT SYSTEM ; IMMOBILIZER
- EMERGENCY BRAKE SIGNAL
- DUAL AIRBAG ; DRIVERS+PASSENGER, KNEE FOR DRIVER
- TRAILER SWAY CONTROL
- TIRE INFLATION PRESSURE WARNING



Emad Motors
144 145 Ducamz Block A, PO Box 25843,
Dubai, UAE
TEL +971 50 6556878

Vehicle Code: TH24ATM

Exterior Features

- BODY STRIPES
- CHROME COLORED DOOR HANDLES
- POWERED CHROME COLORED REAR VIEW MIRROR
- STEEL FRONT BUMPER
- STEEL REAR BUMPER
- REAR GREEN GLASS SLIDE
- HALOGEN HEADLAMP ; 4 BULB (WITH FOLLOW ME HOME)
- REAR FOG LAMP
- FRONT FOG LAMPS
- 17" STEEL WHEELS
- REAR DIFFERENTIAL LOCK